



The Metropolitan Water District of Southern California

Infrastructure Improvement Activities in Your Community

Allen-McColloch Pipeline

ABOUT THE PROJECT

You are receiving this notice in connection with the upcoming repairs on the Allen-McColloch Pipeline.

In a recent inspection, Metropolitan identified distressed segments of the pipeline that require urgent repairs. The initial phase of work will rehabilitate approximately 2,200 feet of pipeline located in the cities of Irvine, Lake Forest, and Mission Viejo.

To prepare for construction, Metropolitan will shutdown and dewater this pipeline. This work is necessary to ensure our water distribution system continues to provide a reliable water supply for our 26 public member agencies that serve 19 million customers.

We ask for your understanding and patience as we work to complete these activities as quickly as possible.

SCHEDULE

Dewatering is scheduled for



April 4 - 25, 2024

Work will occur around the clock (24/7).

WHAT TO EXPECT

YOUR WATER SUPPLY WILL NOT BE DISRUPTED.

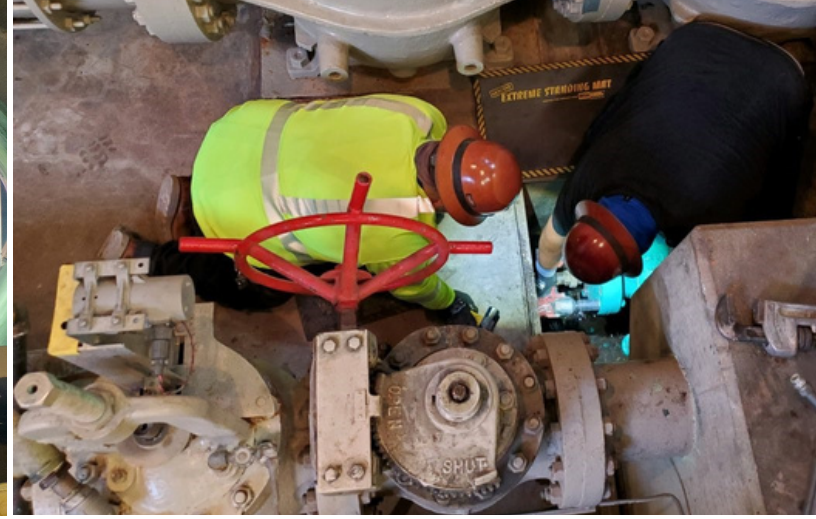
- You may notice trucks, equipment, and our staff at work. The inspection and maintenance requires our crew to work within the pipe.
- You may notice water on the street due to dewatering of the pipeline.
- You may hear noise from portable generators and other equipment.
- There may be "No Parking" signs

URGENT REPAIR

For more information on the Urgent Relining of the Allen-McColloch Pipeline, scan the QR code



The water supply to homes and businesses will not be disrupted.



Allen-McColloch Pipeline Shutdown

WHAT IS A SHUTDOWN?

- One of the biggest challenges to ensuring reliable water deliveries in Southern California is the need to routinely repair and upgrade existing pipelines and associated facilities, some of which are more than 60 years old.
- To meet that responsibility, the Metropolitan Water District of Southern California temporarily takes parts of its delivery system out of service to conduct inspections and perform maintenance and upgrades with the least impact on consumers.
- To safely gain access to many of these facilities, Metropolitan must halt the flow of water temporarily and allow the pipeline to empty. In some areas, particularly low points in the system, this water must be pumped out.
- Metropolitan makes every effort to minimize the amount of water that is discharged. When feasible, the water that is pumped out is discharged into facilities that replenish watersheds and local groundwater supplies. However, in some isolated situations, not all water is able to be captured.

FOR MORE INFORMATION

- ✉ CommunityRelations@mwdh2o.com
- ☎ Ivonne Castillo: (213) 217-6809
Senior Public Affairs Representative
- ☎ Lizeth Martinez: (626) 827-0614
Principal Public Affairs Representative
- 💻 www.mwdh2o.com



THE METROPOLITAN WATER DISTRICT
OF SOUTHERN CALIFORNIA

Thank you. We appreciate your patience and support.